

# TDS SYSTEMS

## TEST DOCUMENTATION SOFTWARE

Add our Test Documentation Package to your new or existing test supply to create a complete Motor Test System. In addition to meter data from the test supply, the Test Documentation Package acquires temperature, vibration and dynamometer data, and displays systems status info from the test supply PLC. (The TDS System is included on the 200KVA and larger designs)



### TEST DOCUMENTATION SPECIFICATIONS

SOFTWARE	HARDWARE
<b>BASE PACKAGE</b>	
AC/DC METER DISPLAY	PC AND MONITOR
NAMEPLATE DATA ENTRY	REPORT PRINTER
REPORT GENERATION	SIDE MOUNTING
TEST HISTORY LOOKUP	
<b>TEMPERATURE &amp; VIBRATION MODULE</b>	
NOMINAL METER DISPLAY	TEMP AND VIBE MODULE
TEMP VS. TIME CURVES	4 THERMOCOUPLE INPUTS
VIBRATION FFT GRAPHS	4 RTD INPUTS
CHANNEL CONFIGURATION	6 ACCELEROMETER INPUTS
TEMP AND VIBE REPORTS	ACCELEROMETERS INCLUDED
<b>DYNAMOMETER INTERFACE</b>	
HORSEPOWER / KW	USB OR SERIAL INTERFACE
% EFFICIENCY / TORQUE (ft/lb)	CONFIGURED FOR AW DYNOS
RPM AND % LOAD	USE EXISTING DYNO

## SOFTWARE

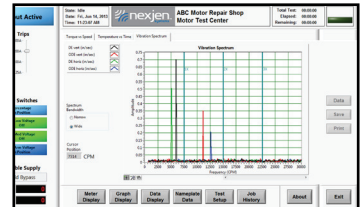
### STANDARD TEST DOCUMENTATION PACKAGE

The Standard Test Documentation Package ships with a PC and Printer, displays real-time AC and DC meter data during tests, records data to a searchable test database and prints a test report to be kept on file and/or provided to the client (Test reports can be directly saved to ACS job folders).

## UPGRADES & ACCESSORIES

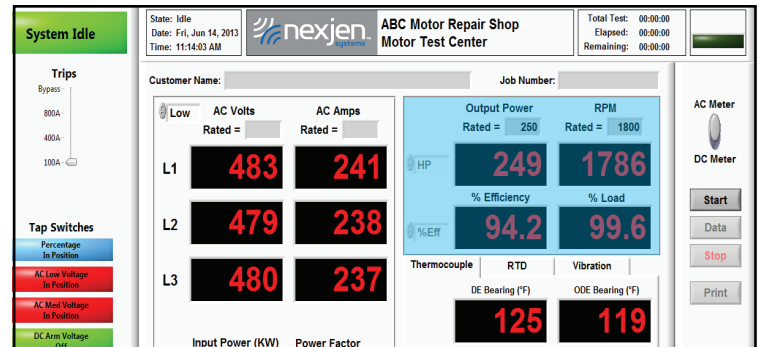
### TEMP AND VIBE MODULE

The Temp and Vibe module is a portable data acquisition system that connects to the Test Documentation PC via a USB Cable. It includes ports for 6 Accelerometers, 4 Thermocouples, and 4 RTDs. The software upgrade includes the display of Temperature and Vibration data on the meter screen, and graphical display of temperature vs. time curves and vibration FFTs.



### DYNAMOMETER INPUT

With a simple connection to an AW Dynamometer Controller the Test Documentation Software displays and records mechanical test data including output power, RPM, % efficiency, % load and torque. Configuration for non-AW Dynamometer is available and quoted separately.



### TDS ADD-ON MODULE

Nexjen TDS Add-on modules allow you to upgrade your existing motor test supply (any brand) with our state of the art Test Documentation System. TDS Add-on modules bolt to the side of your existing test supply and pull electrical test data from the test leads coming out of the supply. TDS Modules are shipped with a PC and our Test Documentation Software for onscreen display of test data and printed test reports.

